

# Communicable Disease Annex



December 2024

## **SECTION 1.0 - PURPOSE AND SCOPE STATEMENTS**

### **1.1 Purpose Statement**

This annex establishes the policies and procedures under which Angelina College will operate in the event of a communicable disease incident by addressing planning and operational actions for all five phases of emergency management. This will include Prevention, Mitigation, Preparedness, Response, and Recovery regarding a communicable disease incident within the college district. The college developed this plan to promote a secure and resilient collegiate environment with the capabilities required across the whole community to prevent, protect against, mitigate, respond to, and recover from communicable diseases, disasters or incidents facing the campus and communities.

In any emergency situation, the overriding goals of Angelina College are to;

- Protect Life
- Secure college infrastructure and facilities, and
- Resume instruction and all academic programs

### **1.2 Scope Statement**

The Emergency Operations Plan (EOP) and all pertinent annexes are meant to address college planning for a communicable disease incident and applies to Angelina College and all college properties, owned or leased, in all counties in which the college operates, and for all activities in which the college participates during an emergency situation.

## **SECTION 2.0 - GENERAL INFORMATION**

Many communicable diseases are required to be reported to the health authority pursuant to State of Texas Laws. Depending on the location of the district, the health authority may be a county, public health district, or the regional office of the Texas Department of State Health Services. Angelina College (AC) reports to Angelina County & Cities Health District (ACCHD) as their local health authority. The college reports notifiable conditions and reportable disease to the local health authority in accordance with state laws.

*Texas Health and Safety Code, Chapter 81, Communicable Diseases*

Sec. 81.002 The state has a duty to protect the public health. Each person shall act responsibly to prevent and control communicable disease.

Sec. 81.042(c) PERSONS REQUIRED TO REPORT.

(c) A local school authority shall report a child attending school who is suspected of having a reportable disease. The executive commissioner by rule shall establish procedures to determine if a child should be suspected and reported and to exclude the child from school pending appropriate medical diagnosis or recovery.

Sec. 81.083 APPLICATION OF CONTROL MEASURES TO INDIVIDUAL.

(a) Any person, including a physician, who examines or treats an individual who has a communicable disease shall instruct the individual about:

- (1) measures for preventing reinfection and spread of the disease; and
- (2) the necessity for treatment until the individual is cured or free from the infection.

(b) If the department or a health authority has reasonable cause to believe that an individual is ill with, has been exposed to, or is the carrier of a communicable disease, the department or health authority may order the individual, or the individual's parent, legal guardian, or managing conservator if the individual is a minor, to implement control measures that are reasonable and necessary to prevent the introduction, transmission, and spread of the disease in this state.

*Title 25. Texas Administrative Code, Part 1, Chapter 97, Communicable Diseases, Subchapter A, Control of Communicable Diseases.*

Rule §97.2: Who Shall Report

(d) School authorities, including a superintendent, principal, teacher, school health official, or counselor of a public or private school and the administrator or health official of a public or private institution of higher learning should report as required by these sections those students attending school who are suspected of having a notifiable condition. School administrators who are not medical directors meeting the criteria described in §97.132 of this title (relating to Who Shall Report Sexually Transmitted Diseases) are exempt from reporting sexually transmitted diseases.

Rule §97.3: What Condition to Report and What Isolates to Report or Submit

(a) Humans.

(1) Identification of notifiable conditions.

(A) A summary list of notifiable conditions and reporting time frames is published on the Department of State Health Services website. Copies are filed in the Emerging and Acute Infectious Disease Branch, Department of State Health Services, 1100 West 49th Street, Austin, Texas 78756.

Rule §97.7: Diseases Requiring Exclusion from Schools

A list of communicable diseases requiring exclusion from schools.

2.0 Hazard Overview

The college recognizes:

Communicable diseases may be transmitted by a variety of methods (being bitten by an insect, breathing in an airborne virus, or touching blood or bodily fluids on shared surfaces or through direct contact with another person).

A communicable disease incident may be occurring if an unusually high number of cases are reported during a time of the year when historically the number has been lower. Additionally, a single case of some communicable diseases (e.g., Ebola, Measles, Bacterial Meningitis), due to their morbidity and/or mortality risk, is considered a communicable disease incident.

Therefore, when a potential communicable disease incident is reported, we will:

Take quick action to do what is possible to prevent the incident from becoming an outbreak. If an incident report comes in, the ACCHD will be contacted and they will coordinate communications with the health department and the college president's office (following HIPAA guidance regarding patient privacy).

Based on the specific communicable disease identified, the college will implement procedures to prevent, mitigate, and respond to the communicable disease incident. Examples of procedures may be notifications of students/parents/staff, isolation, and exclusion of suspected or confirmed cases, or initiation of established procedures for cleaning, disinfecting, and sanitizing.

2.1 College Specific Hazard Risk

While this CDA addresses general actions for responding to most communicable diseases, some communicable diseases require unique actions and will be addressed in separate appendices to this CDA. Colleges are encouraged to contact the Chief Epidemiologist at the Regional Office of the Texas

Department of State Health Services to determine the communicable diseases that are most prevalent and pose a significant health risk to the school community.

Angelina College has identified the following communicable diseases as a high-risk priority based on conducting a hazard analysis for each district facility.

### Disease Descriptions

Name of Disease	Vaccine Preventable	Description of Symptoms
<b>COVID-19</b>	Yes	<u>Symptoms:</u> Symptoms may appear 2-14 days after exposure to the virus. Fever or chills, cough, shortness of breath or difficulty breathing, fatigue, muscle or body aches, headache, new loss of taste or smell, sore throat, congestion or runny nose, nausea, vomiting, or diarrhea. <u>Transmission:</u> It is thought to spread mainly through close contact from person-to-person or touching contaminated objects. Some people without symptoms may be able to spread the virus.
<b>Measles (Rubeola)</b>	Yes	<u>Symptoms:</u> High fever, cough, runny nose, red and watery eyes, tiny white spots (Koplik spots) in mouth, or a rash. <u>Transmission:</u> Coughing and sneezing. The virus can live up to two hours in contaminated air or on a surface.
<b>Meningitis (Bacterial)</b>	Yes	<i>Bacterial Meningitis</i> <u>Symptoms:</u> Fever, headache, stiff neck, nausea, vomiting, sensitivity to light, and confusion. <u>Transmission:</u> Person-to-person (depends on type of bacteria).
<b>Meningitis (Viral)</b>	No	<i>Viral Meningitis</i> <u>Symptoms:</u> Fever, headache, stiff neck, sensitivity to bright light, sleepiness, trouble waking up from sleep, nausea, irritability, vomiting, lack of appetite, or lethargy. <u>Transmission:</u> Caused by other viruses like mumps, measles, or influenza.
<b>Mumps</b>	Yes	<u>Symptoms:</u> Fever, headache, muscle aches, tiredness, loss of appetite, swollen or tender salivary glands approximately 16-18 days after infection. <u>Transmission:</u> Coughing, sneezing, talking, sharing items, or touching contaminated objects.
<b>Norovirus</b>	No	<u>Symptoms:</u> Diarrhea, vomiting, nausea, or stomach pain. <u>Transmission:</u> Contaminated food or drink, touching contaminated surfaces and then putting fingers in mouth, or having direct contact with someone who is infected.
<b>Hepatitis A</b>	Yes	<u>Symptoms:</u> Fatigue, sudden nausea and vomiting, abdominal pain or discomfort (especially on the upper right side beneath your lower ribs by your liver), clay-colored bowel movements, loss of appetite, low-grade fever, dark urine, or joint pain. <u>Transmission:</u> Fecal-oral route (that is, when an uninfected person ingests food or water that has been contaminated with the feces of an infected person).
<b>Influenza</b>	Yes	<u>Symptoms:</u> Fever, cough, sore throat, runny or stuffy nose, muscle or body aches, headaches, fatigue, vomiting, or diarrhea. <u>Transmission:</u> Person-to-person via droplets.

Name of Disease	Vaccine Preventable	Description of Symptoms
<b>Tuberculosis</b>	No	<u>Symptoms:</u> A bad cough that can last 3 weeks or longer, chest pain, or coughing up blood or sputum (mucus from deep inside the lungs). <u>Transmission:</u> Person-to-person via droplets.
<b>Varicella (Chicken Pox)</b>	Yes	<u>Symptoms:</u> Fever, tiredness, loss of appetite, headache, or itchy fluid-filled blisters. <u>Transmission:</u> Touching or breathing in the virus particles that come from the blisters.
<b>Hepatitis B</b>	Yes	<u>Symptoms:</u> Abdominal pain, dark urine, fever, joint pain, loss of appetite, nausea / vomiting, weakness, fatigue, jaundice slant and eyes. <u>Transmission:</u> sexual contact, sharing of needles, accidental needle sticks, mother to child. (Mayo Clinic 2020)
<b>Pertussis</b>	Yes	<u>Symptoms:</u> Runny or stuffed up nose, Low grade fever, Mild occasional cough, apnea and cyanosis vomit during or after coughing fits, feel very tired after a coughing fit, struggle to breathe <u>Transmission:</u> Person-to-person through the air. Spreads when people spend a lot of time together or share breathing space.

## 2.2 Hazard Preparedness and Warning

Angelina College is committed to being prepared to respond to the above identified high risk priority communicable diseases at each campus.

The college coordinates with ACCHD for the prevention and control of communicable disease incidents.

### 2.2.1 Warning the affected campus community

The college has prepared, and has included in this annex, the following public service announcements to be used during a communicable disease incident.

Sample press release during the preparedness phase of a communicable disease incident:

*The safety and well-being of the students, faculty, and staff of Angelina College are of the utmost importance; as a result, we are closely monitoring the communicable disease outbreak in East Texas. At this time, there have been no reported cases in our district. We are in communication with the health authority and will follow their guidance related to the outbreak. If there is any change in the current situation that may impact our district, we will inform you immediately.*

Sample press release during the response phase of a confirmed communicable disease incident:

*The Angelina College has confirmed a **communicable disease name** case in the district. The individual is being treated. We are working closely with the health authority and taking actions to prevent, mitigate, and respond to the communicable disease incident. Students, faculty, and staff that were exposed to the individual are being contacted directly. Any person that was exposed will not be allowed to return to school until they are cleared for return. All other district campuses have not been impacted. If there is any change in the current situation that impacts our district, we will inform you immediately.*

Sample press release during the recovery phase of a confirmed communicable disease incident:

*Angelina College is grateful for the assistance we received from local health officials, and for the cooperation of our community, during the recent communicable disease incident that impacted one campus in our district. Recovery actions have begun in order to allow a safe return to daily operations.*

*The safety and well-being of students, faculty, and staff remains of the utmost importance; we will inform you immediately if there are any further updates.*

For more information about warnings, including the methods used to disseminate emergency information about a communicable disease incident, refer to the Communications section of the Angelina College Emergency Operations Plan.

### 2.3 Access and Functional Needs

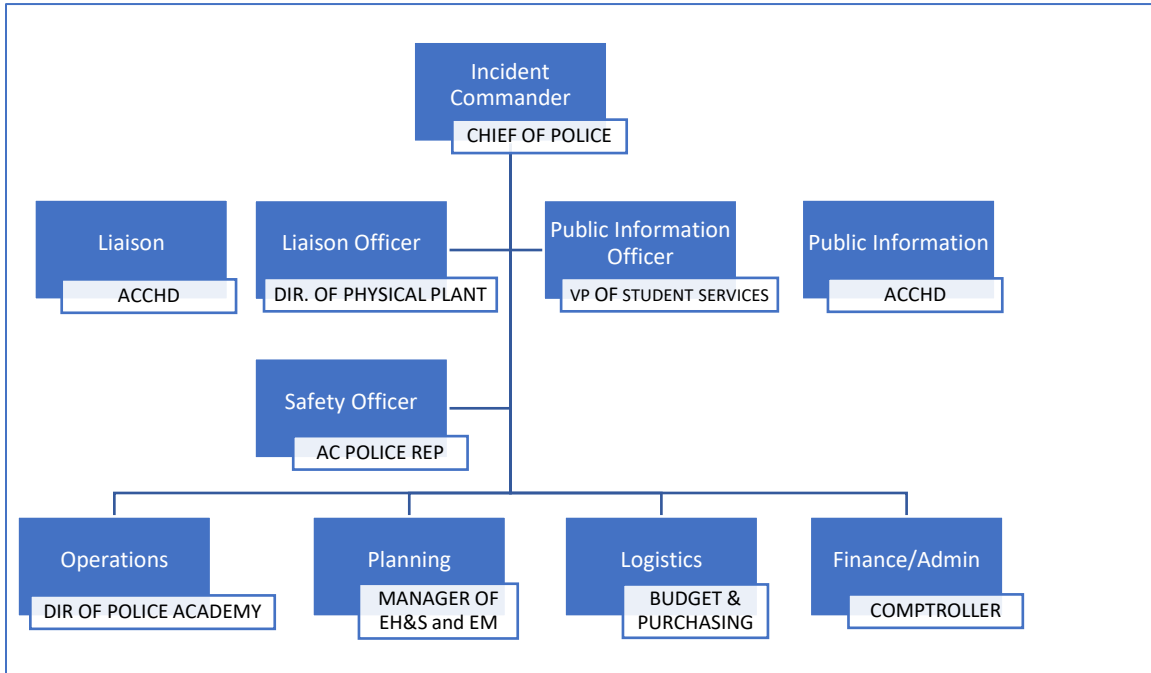
In compliance with Texas Education Code 37.108, Angelina College employs the following measures to ensure the safety and security of those with access and functional needs:

- Disability Services will provide upon request accommodations for individuals with access or functional needs such as hearing or vision impairments.
- During an active threat incident, the class instructor is assigned to assist any student with access and functional needs by directing them to the best available shelter area.

### SECTION 3.0 – ANNEX-SPECIFIC INCIDENT COMMAND SYSTEM (ICS)

#### 3.0 Annex-Specific ICS Organizational Chart

Angelina College will designate an Incident Commander for a communicable disease incident. The Incident Commander will have the ability to expand or contract the ICS structure as necessary during the incident.



**SECTION 4.0 – ACTIONS AND RESPONSIBILITIES**

**Actions and Responsibilities by Emergency Management Phases**

**PREVENTION PHASE**

*Safeguard against consequences unique to a Communicable Disease incident.*

<b>College Action</b>	<b>Responsible Role</b>
Consult with ACCHD to identify the most common communicable diseases in our area.	Manager of EH&S and Emergency Management
Ensure that housekeeping staff is knowledgeable of CDC info. regarding preventative disinfection and cleaning methods for most common communicable diseases.	Manager of EH&S and Emergency Management
Ensure communicable diseases are addressed in the AC policies and procedures.	Manager of EH&S and Emergency Management
Create an educational program for students and staff to prevent the spread of communicable disease	Exec. Dir. Of Student Affairs, ACCHD, CDC

**MITIGATION PHASE**

*Reduce the impact of a Communicable Disease incident.*

<b>College Action</b>	<b>Responsible Role</b>
Develop agreements with ACCHD to acquire needed PPE for a communicable disease outbreak.	VP of Business Affairs
Develop educational measures to reduce the transmissibility of communicable diseases.	Student Affairs, ACCHD, CDC

**PREPAREDNESS PHASE**

*Regularly review district readiness for a Communicable Disease incident.*

<b>College Action</b>	<b>Responsible Role</b>
Remote educational procedures are up to date due to the recent pandemic.	VP of Academic Affairs Dean of E-Learning
Continuity of Operations Plan is in place and waiting for approval.	VP of Business Affairs
Utilize SafeColleges safety & compliance training to provide education on how to reduce the transmissibility of communicable diseases.	Sr. Dir. of Human Resources
Continue our established relationship with the on campus ACCHD clinic.	Exec. Dir. Of Student Affairs

**RESPONSE PHASE**

*College actions during a Communicable Disease incident.*

<b>College Action</b>	<b>Responsible Role</b>
Use this Communicable Disease Annex, CDC guidelines and ACCHD recommendations for responding to a communicable disease incident on the AC Campus.	Manager of EH&S and Emergency Management
Utilize scripted messages as shown in Section 2.2.1 of this document in case of exposure or outbreak.	PIO, LO & ACCHD (Page 6 this doc.)
Track and manage the communicable disease cases on Angelia College campus	HR (Faculty & Staff), Exec. Dir. of Student Affairs (Students), ACCHD
Prepare a plan for procedures for providing food service operations for dorm students	Exec. Dir. Of Student Affairs

**RECOVERY PHASE**

*Return to normal college operations following a Communicable Disease incident.*

<b>College Action</b>	<b>Responsible Role</b>
Psychological safety and mental health concerns following a communicable disease incident will be addressed by the Burke Center at the request of the Behavioral Intervention Team.	Exec. Dir. Of Student Affairs



## SECTION 5.0 - RESOURCES

### 5.1 Acronyms

<b>CDA</b>	Communicable Disease Annex
<b>EOP</b>	Multi-hazard Emergency Operations Plan
<b>HIPAA</b>	Health Insurance Portability and Accountability Act
<b>ICS</b>	Incident Command System

### 5.2 Definitions

1. **Cleaning:** The process of removing germs, dirt, and impurities from surfaces or objects.
2. **Communicable Disease:** An illness or sickness that can be transmitted from one living organism to another either directly or from the surrounding environment.
3. **Disease:** An illness or sickness characterized by specific signs and symptoms.
4. **Disinfecting:** The process of using chemicals to kill or eliminate germs, including viruses, on surfaces or objects.
5. **Epidemic:** An increase, often sudden, in the number of cases of a disease above what is normally expected in a community.
6. **Isolation:** The physical separation of a known infected person from others in order to prevent disease transmission.
7. **Monitoring:** Having an awareness of what is happening around you and how you may be impacted.
8. **Outbreak:** An increase, often sudden, in the number of cases of a disease above what is normally expected in a smaller area than an epidemic (for example, on a single campus).
9. **Pandemic:** A geographically widespread epidemic spread over several countries or continents.
10. **Quarantine:** The physical separation, for a specific period of time, of healthy people who have been exposed to an infectious disease from those who have not been exposed.
11. **Sanitizing:** The process of lowering the number of germs on surfaces or objects to a safe level as determined by public health standards or requirements for a particular scenario.
12. **Social Distancing:** Maintaining distance between individuals in order to minimize personal contact.